

Marblehead

Bicentennial

Quilters

L
E
G
E
N
D

1

2

3

4

5

6

7

8

9

10

11

12

13

14

15

16

17

18

19

20

21

22

23

24

25

26

27

28

29

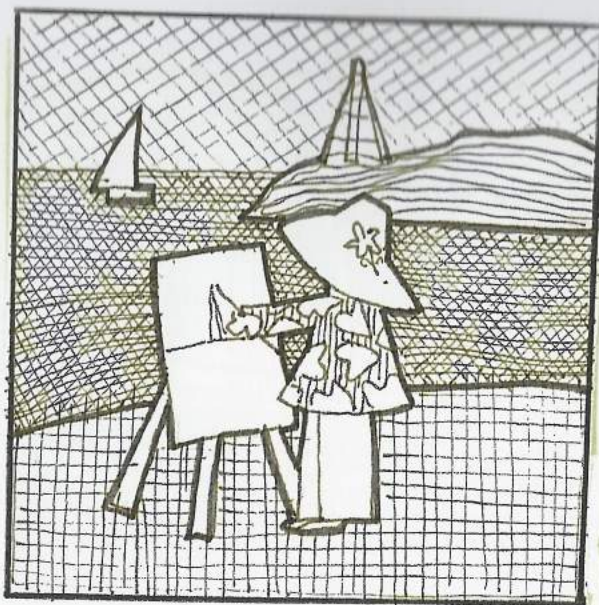
30

31

32

33

Illustrations
by
Elaine Daly
Sally Low
Sueann Tetrault
Judith Tufts
Calligraphy
in Book by
Nancy Ferguson

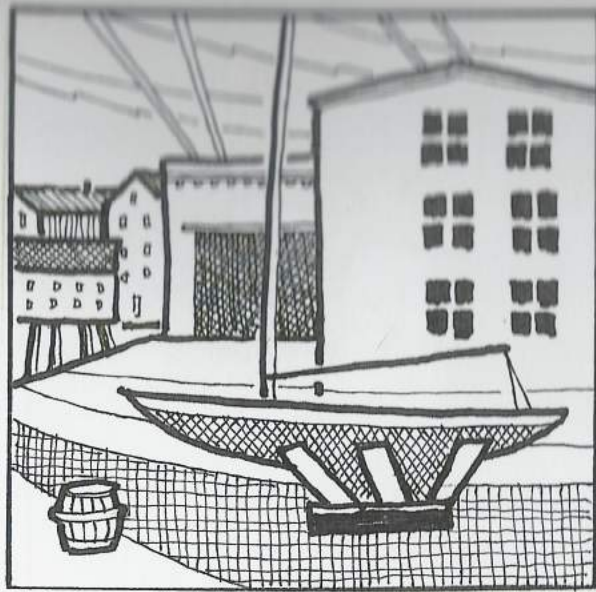


Artists in Marblehead

Small hidden coves, waves rolling into the harbor, white caps with sailboats, sails taut, racing ahead, little crooked streets and charming old houses built long ago, have always provided inspiration to artists.

Pauline Nagle

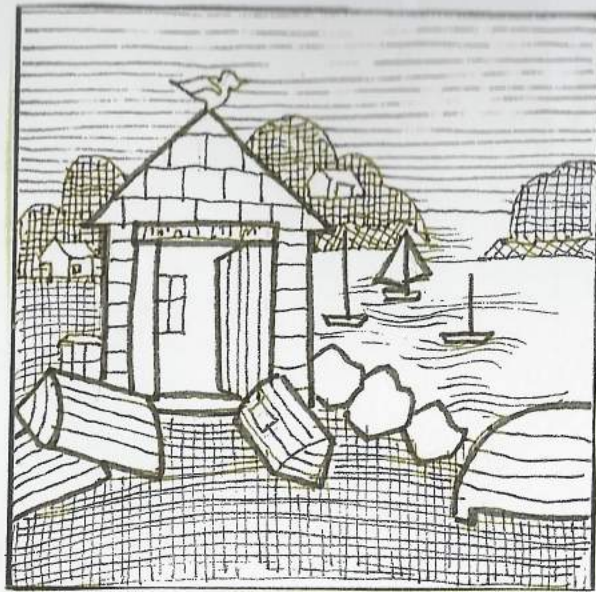
Graves Yacht Yard



Among the famous classes of boats built at Graves, found in 1895, are the 210's, 110's and Triangles.

The twelve meter yacht, 'Nefertiti' was built here in 1962.

Gail Roberts



Lobster Shanty near Little Harbor

Harry Oliver, who owned this shanty for many years, made his traps from one inch cherry boughs gathered in the woods on Atlantic Avenue.

Doris H. Bates

Skipper Ireson's Ride.

In 1808 Skipper Floyd Ireson was tarred, feathered and dragged thru the streets of M'head.



His mutinous crew had unjustly accused him of refusing to aid a floundering vessel with fellow townsmen aboard. John Greenleaf Whittier immortalized the incident in his poem 'Skipper Ireson's Ride' published in 1857.

Priscilla Barclay



Model Sailboat Racing at Redd's Pond

Since 1894, model sailboat races have been held at Redd's pond.

The earliest boats were 24" long, and were home designed and built. Today, Sunday morning races and regattas are still held.

Rachel Anderson

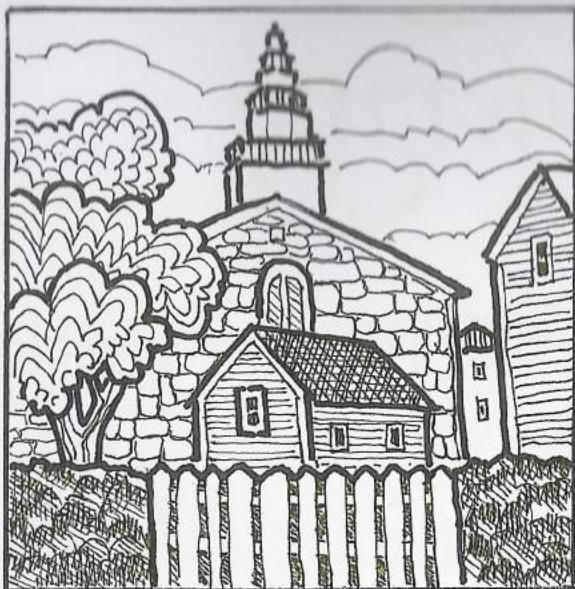
Hooper Street - in a snow storm

Hooper St. was named
after 'King' Hooper, whose
home presently houses
the Marblehead Arts Assn.



Robert Hooper, owner of a fleet of merchant
ships in the 18th century, was dubbed 'King'
by his devoted sailors for his honor and
integrity. He built King Hooper Mansion
in 1747, as an addition to the original
house built in 1728 by his father.

Virginia M. Boylan.



'Old North' First Church of Christ

Organised in 1684
by the Reverend Samuel
Cheever, the original build-
ing was located on Old

Burial Hill. The present building was
constructed in 1824, using stone from the
ledge upon which it sits. The church owns
a fine antique sacramental silver collection,
including one of Paul Revere's designs.

Carol Twadell

7.

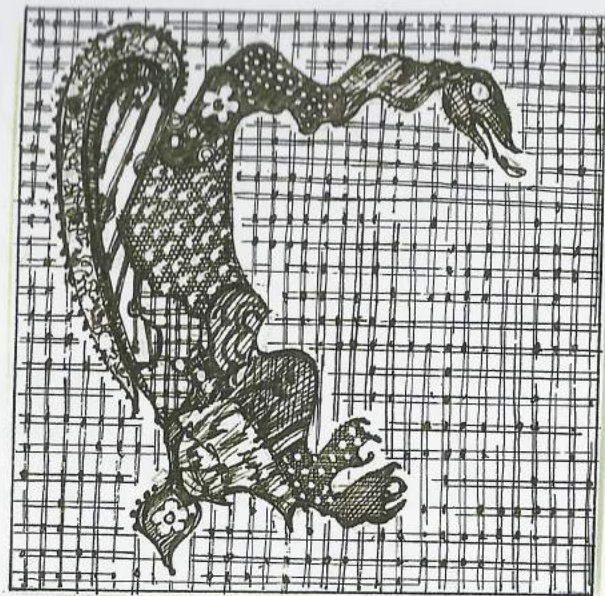
Gerrymandering

The "Gerrymander," a cartoon showing a salamander representing the shape of Essex County was drawn in 1821 by Nathan Hale, editor of the Boston Weekly Messenger. It exaggerates the absurdity of the new districts set by the leaders of the state legislature to increase their own influence. **The** plan was named after Elbridge Gerry, who was Governor of Massachusetts at the time.

cont. →

8.

Elbridge Gerry, born in Marblehead in 1744 had had a distinguished career. He was a patriot - a signer of the Declaration of Independence, a member of the Constitutional Convention of 1787, and was vice president of the United States. Unfortunately, he is also remembered in connection with "Gerrymandering."



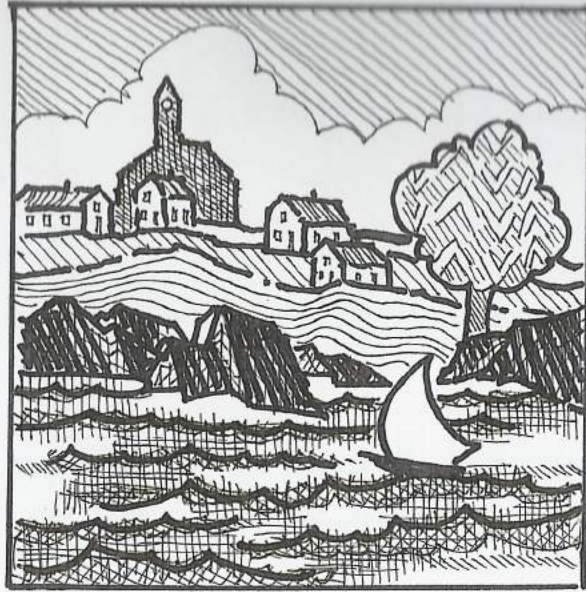
Susan Rohrbach

The Powder House



In 1755 a powder house was built to protect the local supply of muskets and powder. Used during the French and Indian Wars, the Revolutionary War, and the War of 1812, it is one of three pre-Revolutionary powder houses still standing in the United States today.

Brenda Priess



Crocker Park

Formerly known as Bartoll's Head, this land was deeded to the town by Uriel Crocker in 1886 for use as a public park.

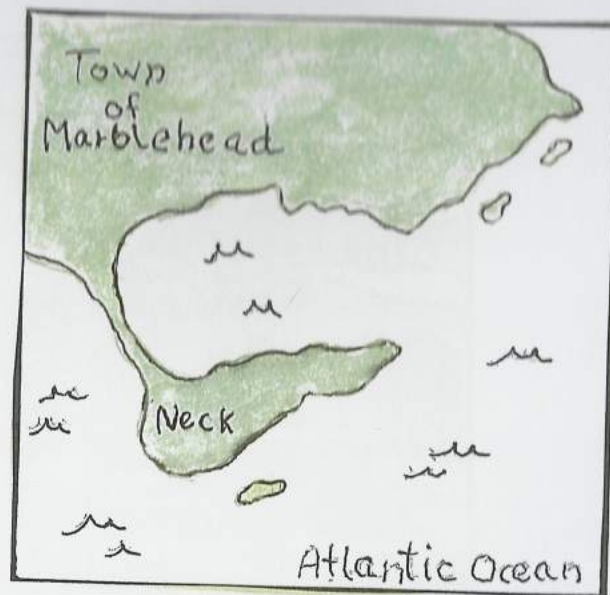
Today, Crocker Park is the scene of summer band concerts, Arts Festival entertainment and a point commanding a most total view of the harbor.

Dorothy Howey

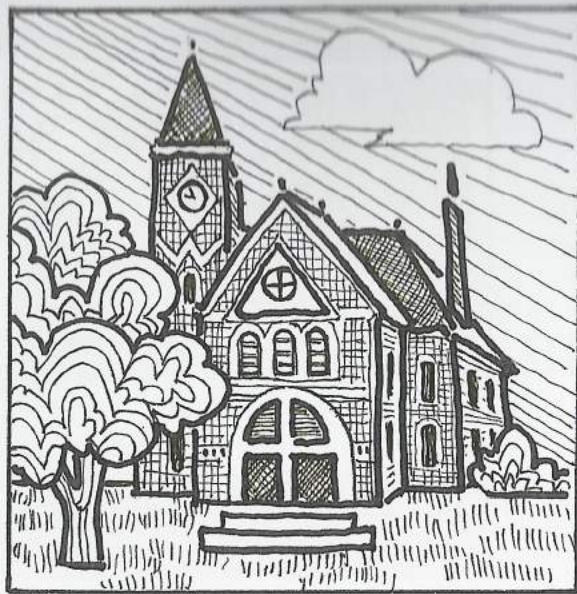
Map of Marblehead

In colonial days, the town stretched from Fore Street (Front St) to Back Street (now Elm Street)

Today the town measures approximately four square miles. Many of the town's most important streets, geographical features, and historic buildings have been named in honor of illustrious Marbleheaders who played distinguished roles in local and national history.



Nancy L. Legro.



Abbot Hall

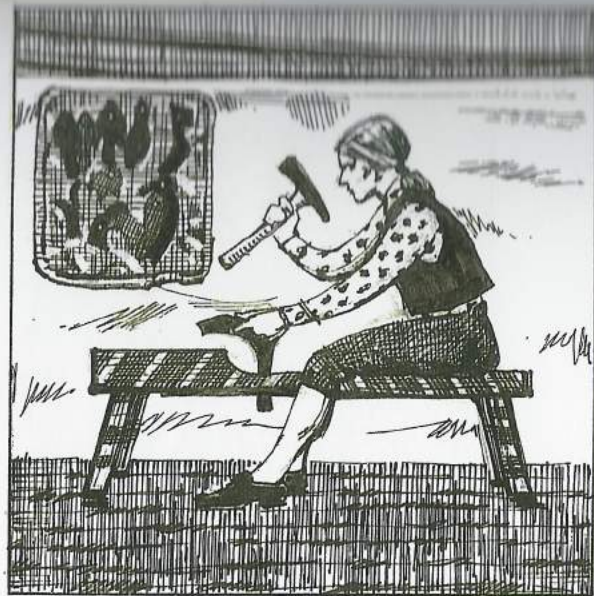
- was built for the centennial in 1876, and named after Marblehead, Benjamin Abbot, who had bequeathed a sum of money

for that purpose. Located there is the Indian Deed to the town, signed in 1684; also the famous painting 'Spirit of '76'. The Victorian bell tower stands guardian over the town, and may be seen far out to sea. The Board of Selectmen holds its meetings there.

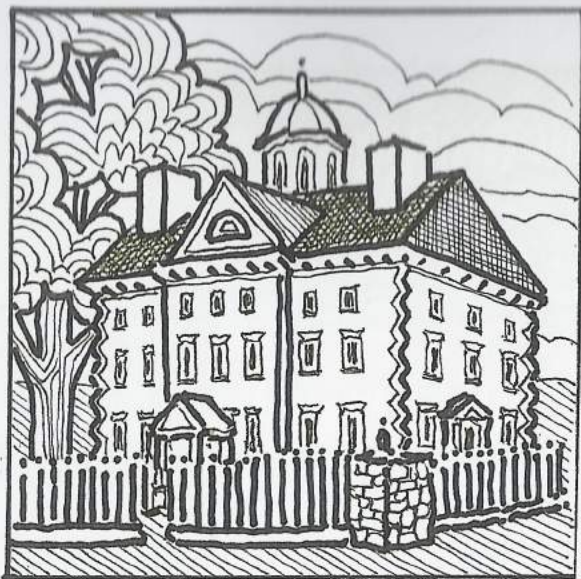
Carol H. Eldridge.

Cordswaining

During the 1700's, Marblehead fishermen found part-time employment making shoes. By the mid 1800's, shoe factories existed all along the railway line & prospered. During the Civil War, the local industry filled government orders for boots & shoes. In the postwar period more than 5,000,000 shoes were shipped from town to places throughout the world. Two devastating fires, in 1877 & 1878, destroyed the factories, causing the final decline of the industry.



Beverly S. Stone



Lee Mansion

The mansion was built at a cost of £10,000 in 1768 by Colonel Jeremiah Lee, a shipping merchant. It was described by a cont-

emporary Boston newspaper as "the most elegant and costly furnished home in the Bay State Colony." In 1909, the M'head Historical Society purchased it for its headquarters, & refurbished it in the manner of the period. It is a Registered National Historic Landmark.

Judith Rousseau.



The Spirit of Seventy Six

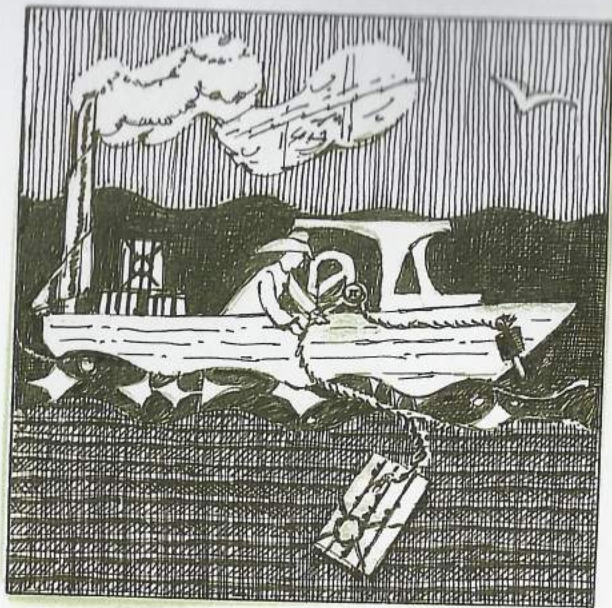
The first of several versions of the fife and drum trio was a comical cartoon of three militiamen parading around a training camp. The artist, Archibald M. Willard, later painted patriotic versions of the cartoon with the trio dressed in Revolutionary War attire. The canvas that hangs in this room was exhibited at the Philadelphia Centennial in 1876. The painting was presented to M'head by Gen. John H. Devereux - whose son posed for the figure of the drummer.

Ann Graves, Ann Hogarty, Judy Rousseau, Frances Sheridan.

The Hearth & Eagle

This house was built about 1727 by Elbridge Gerry's father. The Gerry family lived there for over 100 years. It was sold to William Peach Brown in 1832. His descendants have lived there ever since. During the war of 1812, officers of the Fort Sewell garrison were billeted at the house, at which time soldiers made the outer shutters still in use today. The house is the setting for the novel "The Hearth & Eagle" by Anya Seton.





Lobsterman

Lobsters were once in such abundance that local Indians used them as bait and as fertilizer for their crops. Since the introduction of the trap at the turn of the century, the sight of a single man in a boat hauling traps has been typical. Today there are only eighteen professional lobstermen operating in Marblehead.

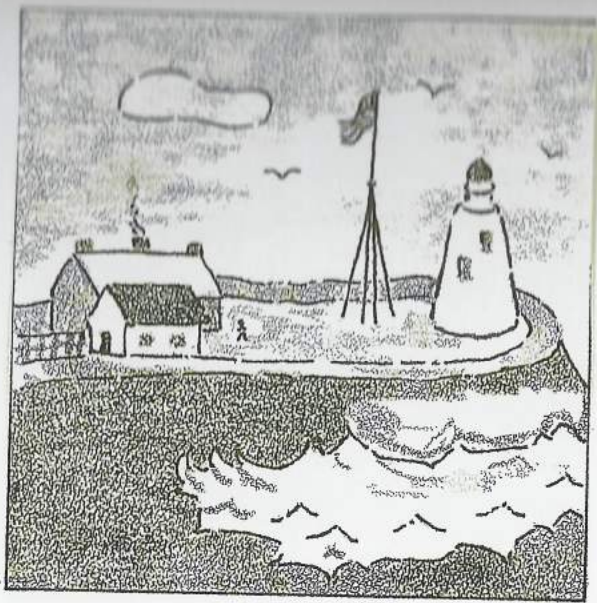
Anne P. Bailey

The Old Squash House



The Old Squash house was built about 1720 on Gerry Island in Little Harbor. Later it was moved to Elm Street and was used as a storage house for the Gregory Seed Co. In the early 1930's the building was leased to Marblehead's Little Theatre. Eugene O'neil produced several plays there.

Cheri Aronson



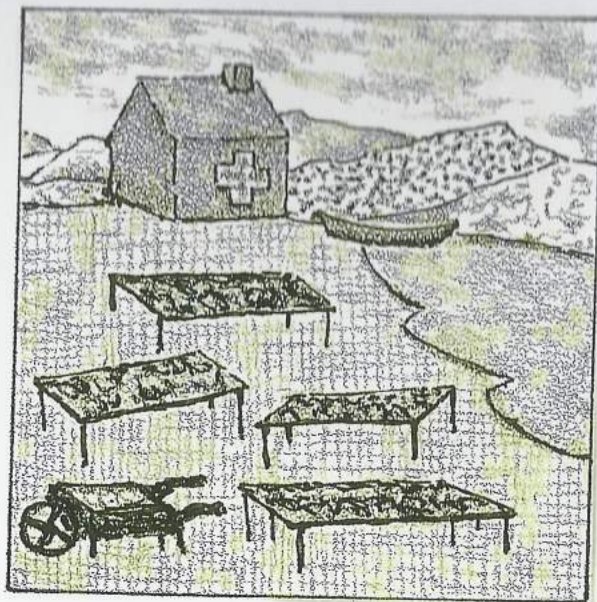
Marblehead Light 1856

On August 30th, 1831, the town petitioned Congress to erect a lighthouse on Point Neck. Ezekial Darling, a former gunner on the old Frigate "Constitution" was the first keeper of the white stone structure. It was replaced in 1895 by the steel or iron tower presently standing on Marblehead Neck.

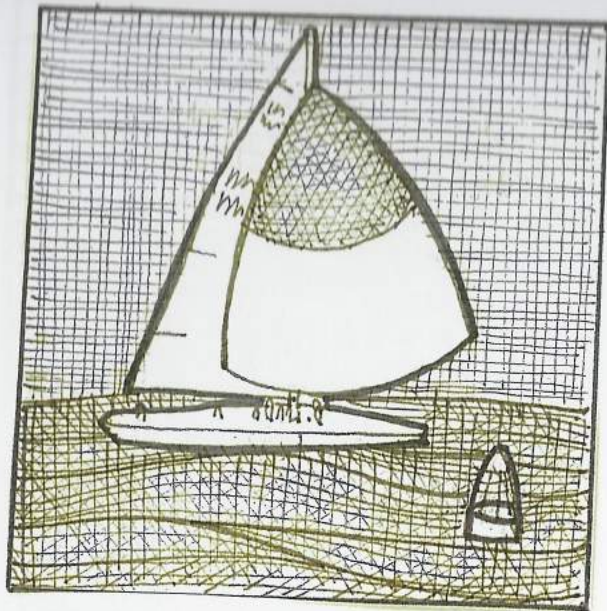
Cynthia N. Carone

Fish Flakes

The first fishermen of Marblehead were the settlers of Little Harbor. They fished on a small scale, with hand lines on local shoals and ledges. They set up drying frames or flakes, a network of branches supported by saplings or beach stones, which would allow air to circulate around the split & salted catch.



Margaret Tufts



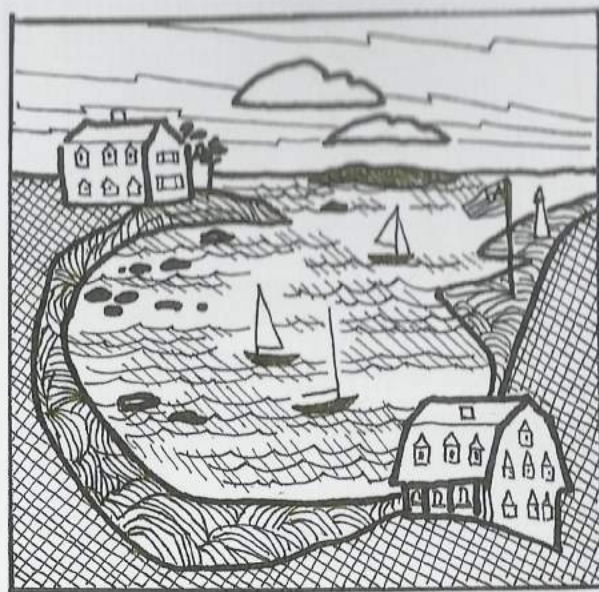
Courageous

12/U.S.

"Courageous" was skippered by Ted Hood of Marblehead and successfully defended the America's Cup of 1974, defeating the Australian 12 meter "Southern Cross" off Newport, Rhode Island.

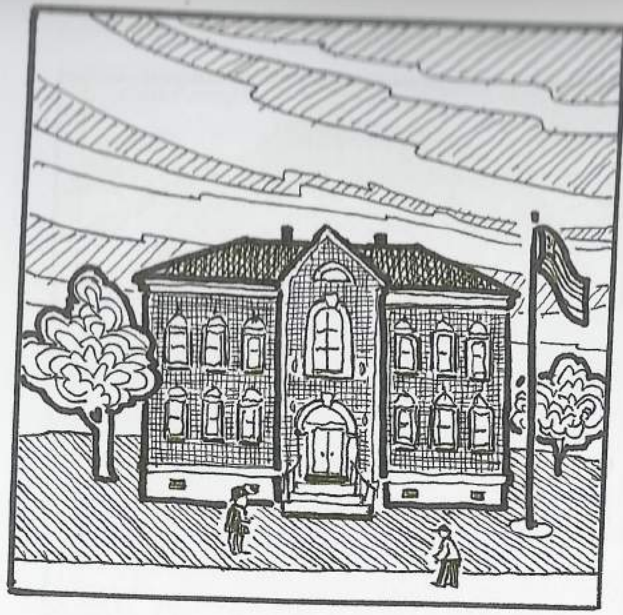
Colleen Kelly

Grace Oliver's Beach.



Grace Oliver's Beach ~
so named for the owner
of the brown house dep-
icted at the lower right of the patch. This
beach has always been a popular swimm-
ing & sunbathing spot for the townspeople,
besides presenting a most beautiful view ~
with its combination of rocks & pine tree
dotted shore line.

Doris Eagen.



The Story Grammar.

Built in 1880, the school was named in honor of Judge Joseph Story who was born in M'head in

1779. A graduate of Harvard, he practiced law & became a representative to the General Court of Massachusetts. After one term in Congress, he returned to the Mass. Legislature & became Speaker of the House. In 1811, President Madison made him a United States Supreme Court Justice.

Eva Filbin

Old Town House

Built in 1727, the Old Town House is the most historic building in this town. A market hall was located on the first floor, while town meetings & stormy pre-Revolutionary rallies were held upstairs. General John Glover recruited his Essex Regiment here. The granite foundation added around 1830, raised the building a further story.



Nat Phillips



The Town Seal.

At town meeting in 1909 this description of a town seal was proposed and adopted ~

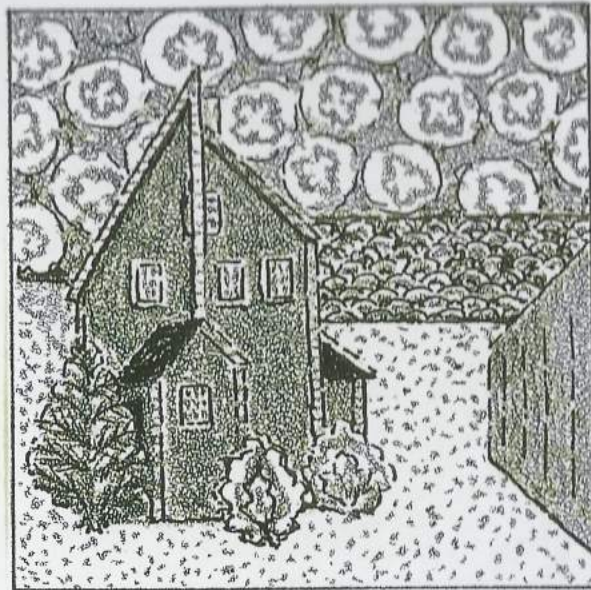
“An enterprising fisherman, in his dory on the banks in the morning before sunrise, has pushed out from his schooner

to find a good berth for his morning catch. Having found what he thought might be one, he had thrown out his line, that he may be sure there are fish there. He has found the fish as alert as himself, for one has caught his bait, and he is pulling him in...”

Barbara Farrell

From Town Reports bk. 11
page 485.

The Spite House



Built prior to 1690 the Old Spite House stands at the entrance to Gas House Beach on Orne St. The house received its name because three fishermen, the Braves brothers, each occupied a section of the house, with its own entrance, stairway and chimney.

Teri Hughes.



Doorway - in old Marblehead

Located at 15 Circle Street, this example of early colonial architecture was the home of Nicholas Merritt, a merchant and descendant of one of Marblehead's first 17th century selectmen.

Jane Hunt

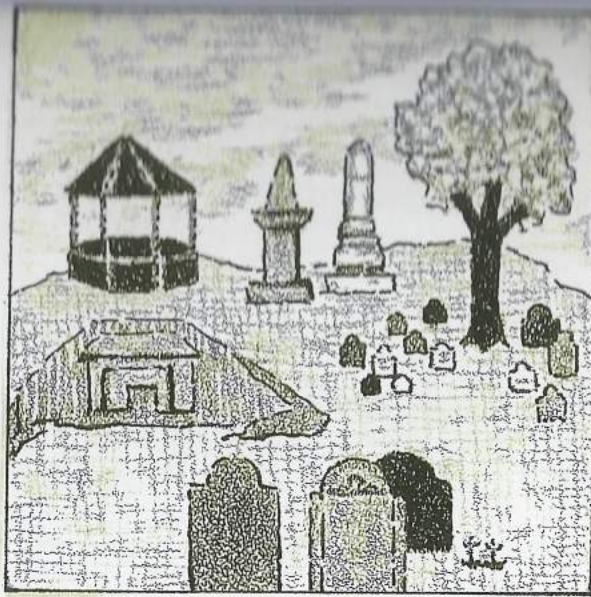
Marblehead Race Week

In 1885 the Corinthian Yacht Club held a mid-summer series of four races for boats under



30 feet. In 1902, the Boston Yacht Club, in celebration of the opening of its Marblehead station ran two races, and the midsummer series was extended to a week. By the 1930's Marblehead's race week held the record for the number of entries in any racing series in the nation.

Susan Ball



Old Burial Hill

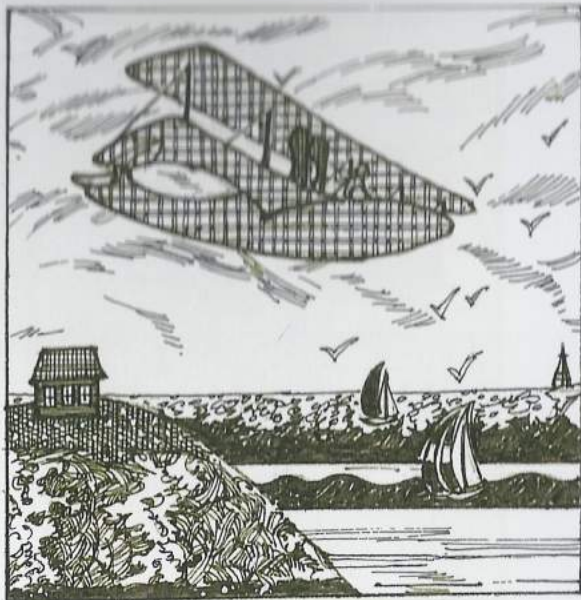
The first burial ground in Marblehead was chosen, following English tradition, on the site of the first town meeting house. The oldest

stone dates from 1691. James Mugford, the first M'header to lose his life in the Revolution, is buried there, as are Gen. John Glover, Parson Barnard, Samuel Cheever, & some 600 Revolutionary soldiers. The largest monument commemorates the captains & crews of eleven M'head vessels lost in a storm on the Grand Banks in 1846.

Madeline Cormier

Burgess Curtis — Aircraft Company

In 1910, William Starling Burgess & Augustus Herring completed a biplane which they named 'Flying Fish'. This feat launched the airplane industry of Marblehead. In 1916, an altitude record of 10,000ft. for a seaplane was set by the Navy in one of the Burgess Aircraft models. As a result of a fire in 1918, Marblehead's role in aviation passed into history.



Jan Barber & Nancy Copps



Hannah

In an attempt to keep British ships from supplying their troops in Boston from the sea, Gen. Washington authorised Col. John

Glover to fit out vessels to stop this traffic.

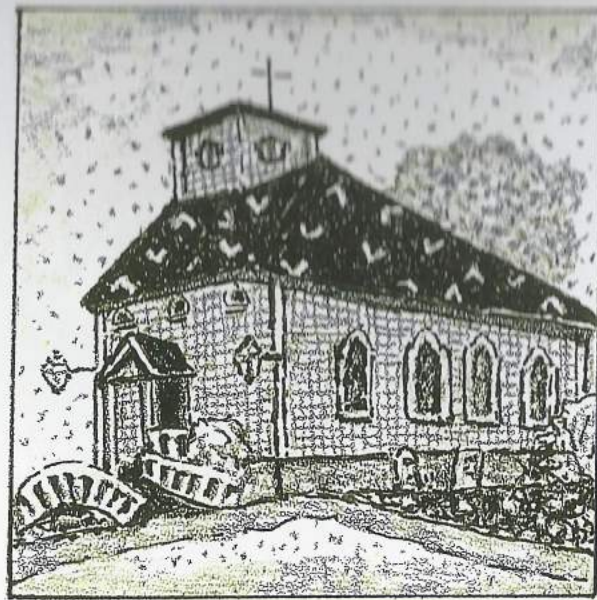
The 'Hannah', owned by Col. Glover's brother, was the first of five schooners transformed and armed to become "Washington's Fleet."

These vessels, manned by Marbleheaders, were the real beginning of the American Navy.

Anne H. Scully

St. Michael's Church

Listed as a National
Historic Landmark it was
built in 1714 & is the old-
est Anglican church build-
ing in New England. 19th



century renovations give the church a Victorian Gothic character but the original square floor plan, box pews & subsequent balconies are in colonial American "meetinghouse" style. At news of the signing of the Declaration of Independence in 1776, the church bell was rung until it cracked. It was re-cast in 1818 by Paul Revere.

Renee Conly



Redd's Pond

Redd's Pond, near Little Harbor, was named after Samuel Wilmot Redd who lived in a small house at the southeast edge of the

pond. Wilmot was the only Marbleheader hung for witch craft. Scene of model sailboat racing & home for ducks in summer, a fine skating rink in winter, and a pleasant place for a leisurely walk at any time of year.

Jane Cooke